

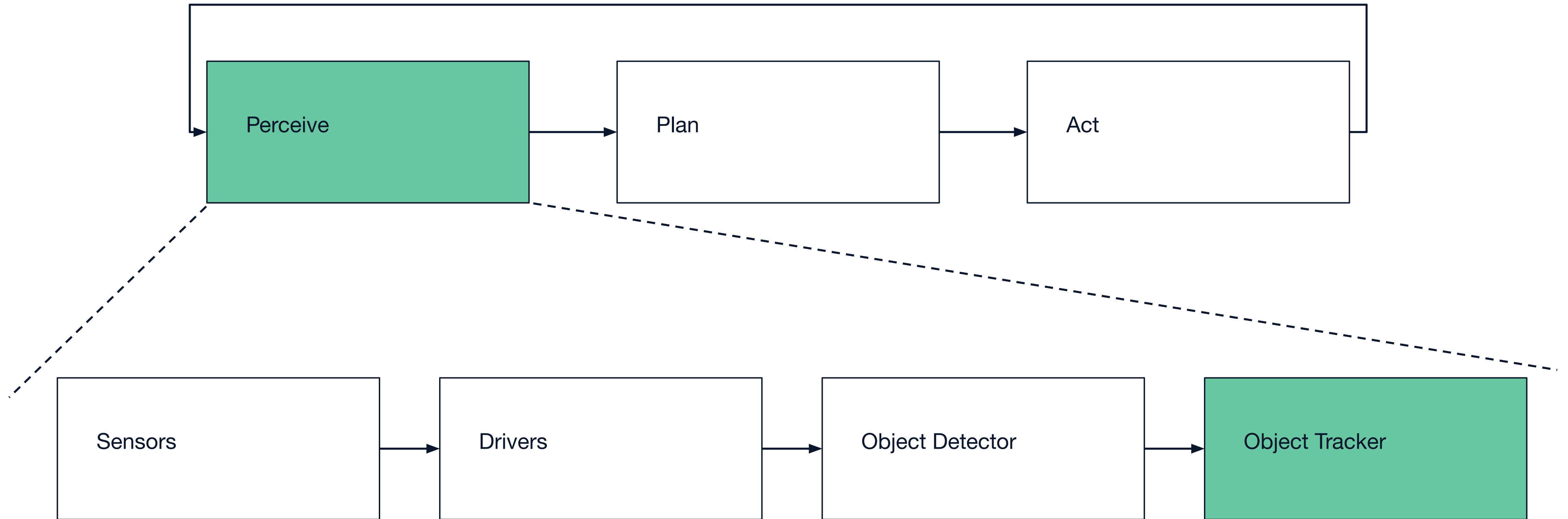
Apex.AI[®]

The vehicle OS company.

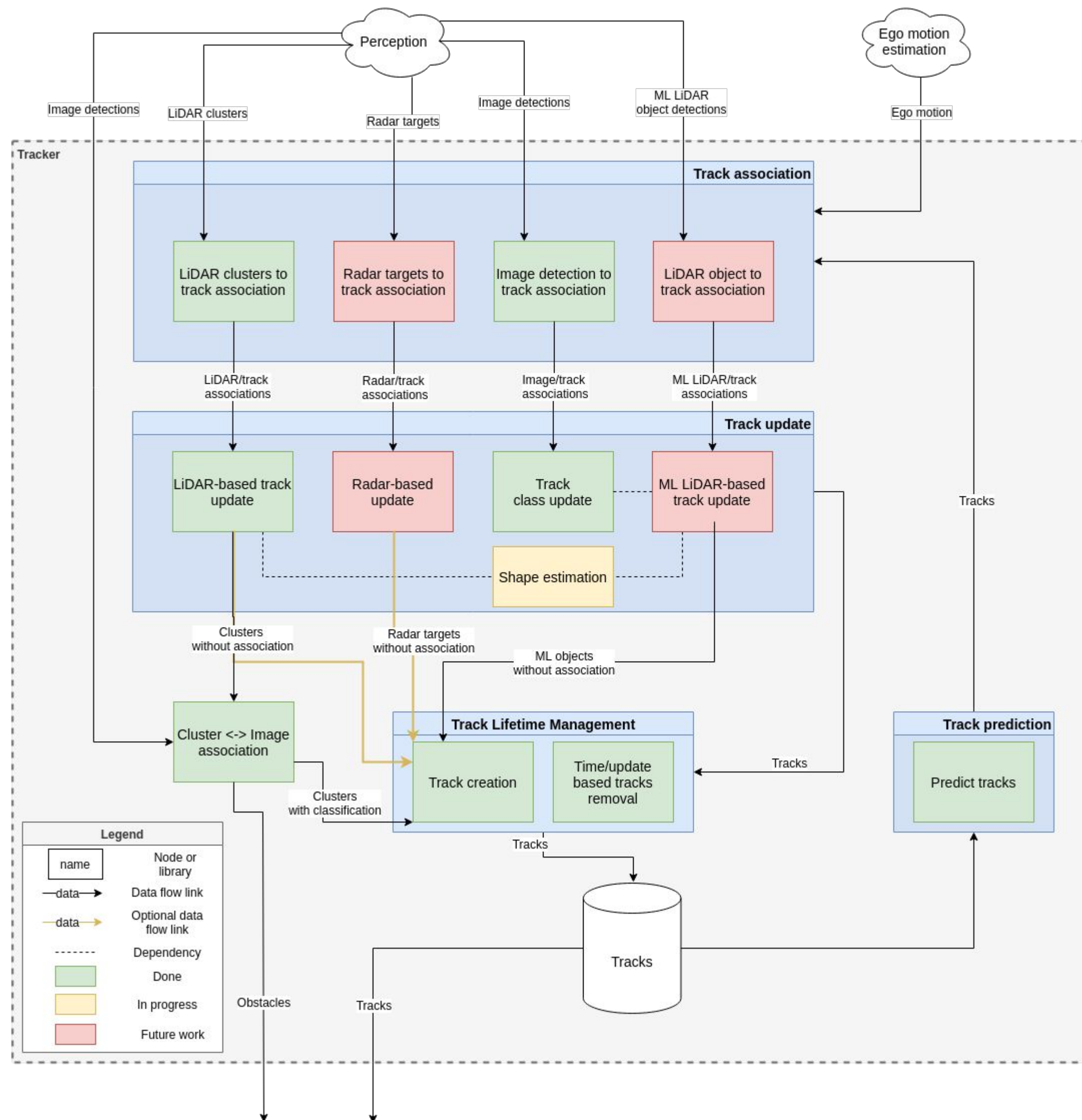


Object Tracker in Autoware.Auto

Multi-Object Tracker in Autonomous driving

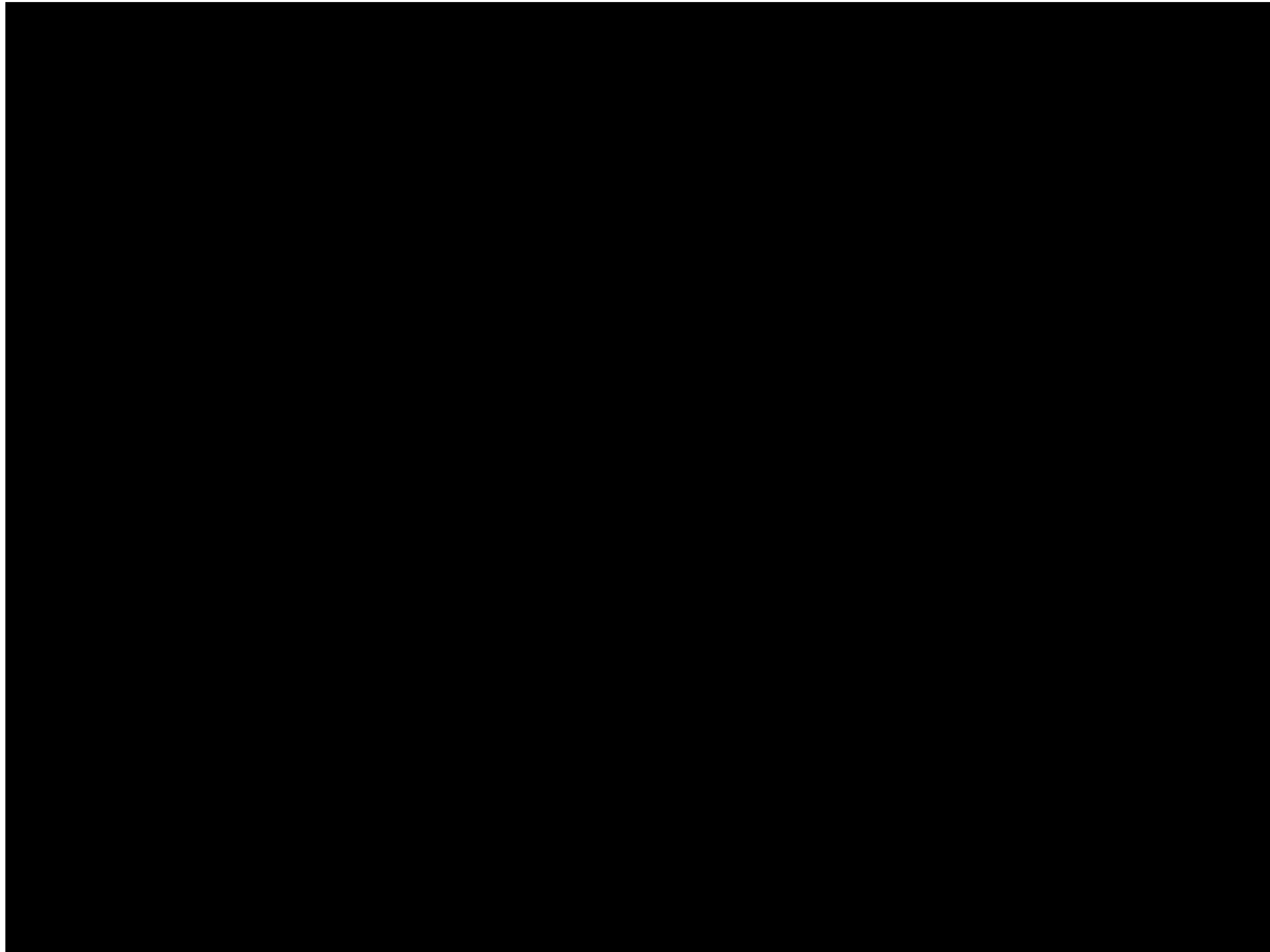


Multi-Object Tracker in Autoware.Auto



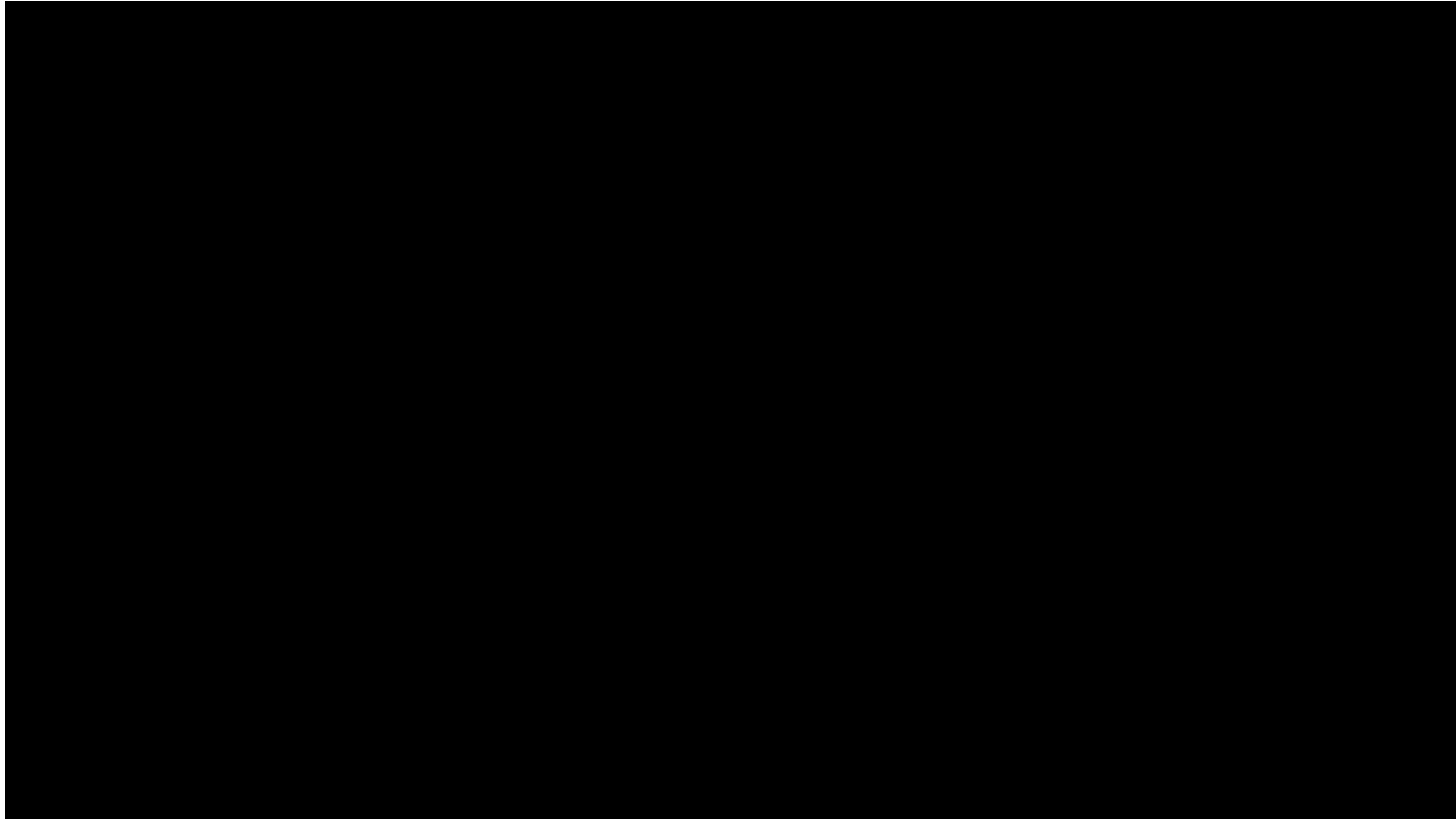
- Data driven process triggered by LiDAR Clusters message
- Currently fuses LIDAR clusters and Image detections
- Can be easily extended to support other inputs
- Some of the ROS components used,
 - ROS node
 - TF
 - message_filters (cache, time_policies)
 - Messages (geometry_msgs, nav_msgs)
 - Rviz
- Link to code: <https://gitlab.com/autwarefoundation/autware.auto/AutowareAuto>

Multi-Object Tracker in Autoware.Auto



Uses ground truth lidar
and camera detections
from SVL simulator

Multi-Object Tracker in Autoware.Auto



Uses ground truth
camera detection.
Lidar is processed by
clustering pipeline